



INTERNATIONAL
BEST FIELDS BEST FOOD Ltd.

BFI Presentation – UNFCCC COP30

Call to action | Climate extremes have exposed millions of people to acute food insecurity and reduced water security, with large impacts observed across communities in Africa (IPCC, 2023)

~21-37% of total greenhouse gas (GHG) emissions are **attributable to the food system**. Without intervention, these are likely to **increase by 30–40% by 2050**, due to increasing demand based on population and income growth and dietary change (IPCC, 2015)

Increasing needs

~50%

Increase in food production is needed to feed the increasing world population

Persistent food insecurity

~821M

undernourished, 151M children stunted, 613M women & children iron-deficient

~183M

Additional people at risk of hunger by 2050, with inequalities globally

Continued pressures

-30M_{USD}

of crop and livestock production was lost due to natural disasters between 2008-2018 in Africa

Land deterioration

-22%

Of vegetated land showed a decline or unstable productivity between 1999-2013 in Africa

-70%

Reduction of arable land per person (ha/pax) by 2050 vs. 1960

The **BFuture Farm** is a cooperation and agricultural development model that aims to respond to the challenges of the African continent by promoting a sustainable, innovative and inclusive farming approach

Standing by 3 fundamental values

Sustainability



Cultivating and distributing locally, respecting the land, and reducing our ecological footprint

Innovation



Infrastructure solutions designed to optimize resource efficiency and mitigate GHG emissions

Inclusivity



Training programme and income generation for local farmers, building community infrastructure

“Food security accross Africa is at the heart of our commitment”

Ghana



Congo



Senegal

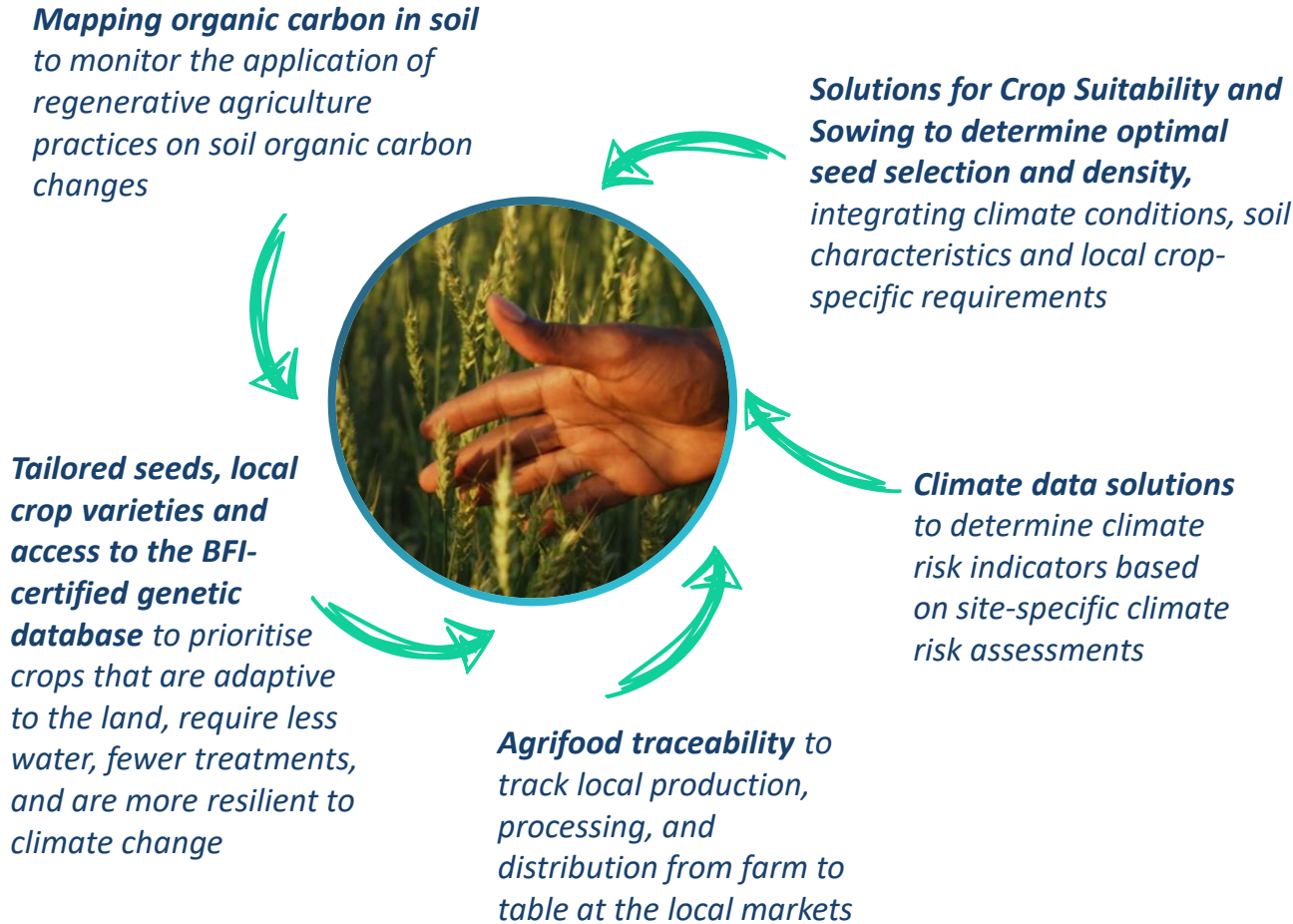


Agricultural Platform

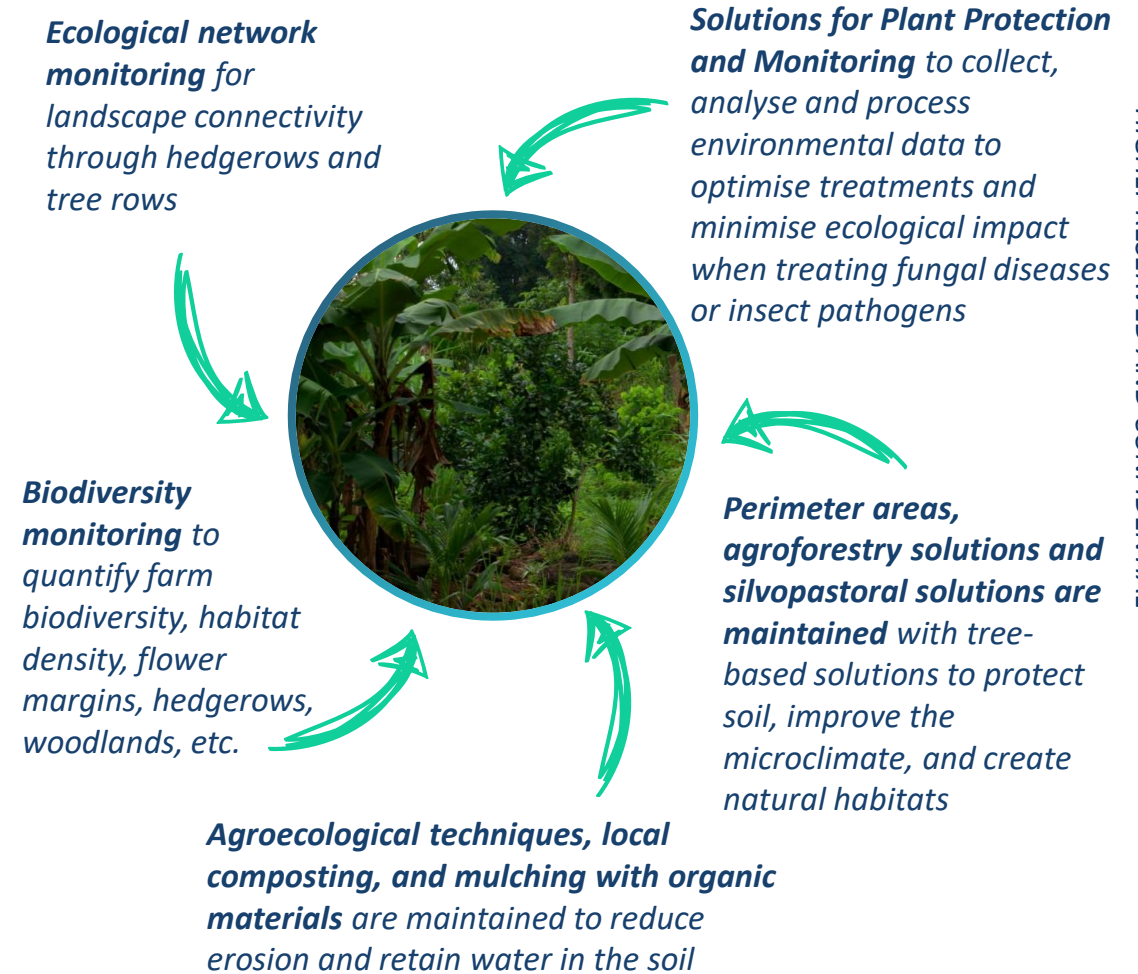
BFuture
farm
10kha

Community

Local production and distribution adaptive to local conditions



...respecting the land and conserving biodiversity



HIGHLY RESERVED AND CONFIDENTIAL

Using advanced irrigation & Renewable energies ...

Optimised irrigation through solar-powered pumps and sensors that monitor the water in the soil and weather-climatic variables

DSS for irrigation to optimise water use based on irrigation scheduling, volume and timing, combining weather, soil and crop data



Biomass is converted to energy to reduce environmental impact and improve energy efficiency in farm operations

Weather data solutions to integrate grid-based meteo data into daily operations, such as historical reanalysis, near-real-time data, high-frequency nowcasting and forecast data

...and precision agriculture with reduced carbon footprint

Barn sensor technology to monitor GHG emissions, detect and optimise parameters (temperature, humidity, airflow) to optimise livestock environments

Emissions monitoring with eddy covariance towers to monitor GHG fluxes between soil and atmosphere, quantifying the impact of the agricultural activities. A combination of satellite and land-based data



Data Hub that handles geospatial information from Earth Observation, IoT and other sources with the aim of agribusiness development and decision support

DSS for nutrition and phenological stages Prediction, optimising fertilisation and harvest plans, focused on environmental and agronomic sustainability

HIGHLY RESERVED AND CONFIDENTIAL

Training programmes and sharing of know-how

Dedicated training in agronomy, agribusiness management and agri-tech solutions

Skills development in precision agriculture, sustainable and data-driven land management



Access to BF Educational know-how, scholarship opportunities to build the science base for science-driven agronomic expertise

...community benefits and stronger livelihoods

Improved facilities and benefits to the local community, by building/upgrading accommodation, dormitories, canteens for workers, schools and healthcare facilities

Strategic alliance with local stakeholders concerning land concessions



Safe working conditions and stable income for >100 farm workers

Inclusion of communities as a whole, equal access to resources between men and women

HIGHLY RESERVED AND CONFIDENTIAL

Thank you
on behalf of BF Group ^{1,2}



Established for the **development, planning, and execution** of the Group's **international projects**.



Specialised in international development consulting in the fields of environment, climate change and renewable energies in partnership with **universities, research centres, and national authorities** across Africa.



Dedicated to promoting research and innovation in the field of digital agri-livestock.



Data company of the BF Group, whose mission is to create **data networks** supporting **digital agriculture and livestock farming**.



Dedicated to providing agronomic support through the use of **cutting-edge technology and methods** within the Group

^[1] *In partnership with Ciheam Bari*



HIGHLY RESERVED AND CONFIDENTIAL

^[2] *Not an exhaustive list of BF Group companies*